



SAHARA  SIWAHBIO

SAHARA SIWAHBIO

Sahara presents the new Siwah Bioclimatic, with a modern and minimalist design for enjoying the outdoors all year round. Siwah Bioclimatic can regulate the microclimate of wherever it is set up, thanks to its motorised system, which can adjust the opening inclination of its slats, providing natural ventilation with minimal energy consumption. Perfect for residential use and the Catering and Hospitality Industry.

Siwah Bioclimatic is compatible with enclosures such as the Qatif Lite vertical awning or glass encased system, which provide a fully

protected space to keep enjoying the comfort of your outdoor areas, such as gardens and terraces.

Equipped with motorisation, LED lighting, home automation, rain sensors, and closed-off walls, the Siwah Bioclimatic pergola can become the highlight of your outdoor space.



CNC MACHINING

Manufacturing technology using Computer Numerical Control machines. Top quality and resistance.



LASTING QUALITY
UNALTERED ALUMINIUM



WATERPROOF AND WINDPROOF

Its perimeter sealing system makes it waterproof, providing a watertight and comfortable space.



STABLE AND STURDY

The product provides superior safety, certifying a Class 6 wind load resistance according to the UNE-EN 13561 standard, and it is Class 11 certified on the Beaufort scale.



COMBINATIONS

The paint used is QUALICOAT certified, **Class 2 (super-durable)**.



Colours may vary slightly in shade due to the printing process. Contact your sales representative.



Check the full range
of finishes



ACCESSORIES

Lighting



Home automation



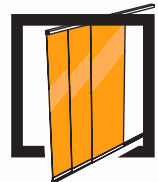
Sensors



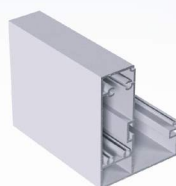
QATIF
Enclosure



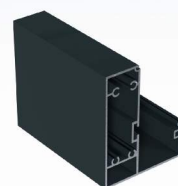
+GLASS
Enclosure



FINISHES



White



Textured grey



Coarse tigerwood

SIWAHBIO features

- Flat roof design
- Coverage up to 48 m² with three pillars
- Integrated water drainage system
- Waterproofing
- Automated opening and closing system
- Remote control via handheld device or smartphone App
- Neon LED perimeter lighting with different degrees of intensity
- Weather sensors for automatic closing and opening management
- Screws concealed in the profile connection



SIWAHBIO technical features

- Wind resistance according to the UNE 16561 standard
- Rain resistance
- 1800 Nw linear motor
- 4000-4500 K LED intensity
- Double motor from 16 m² and up
- 6063T6 aluminium alloy
- CNC parts
- Super-durable Class 2 Qualicoat finishes



WARRANTY
10
YEARS

10-year WARRANTY

Sahara guarantees all its products for a period of 10 years.



Maximum protection from the environment

Wind protection: it has the highest wind-resistance classification on the market, Class 6 according to the UNE EN 13561 standard. Rain protection: thanks to its perimeter water drainage and sealing system, it is waterproof on rainy days. Sun protection: thanks to its aluminium

slat closing system, you will be protected all year round. Natural ventilation: by opening the slat system at a 45°/105° angle, you will create a natural flow that moves the hot air upwards.

0°

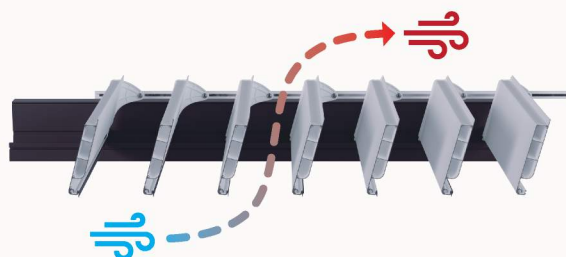
Flat roof

Maximum protection and sealing against wind, rain, and solar radiation.



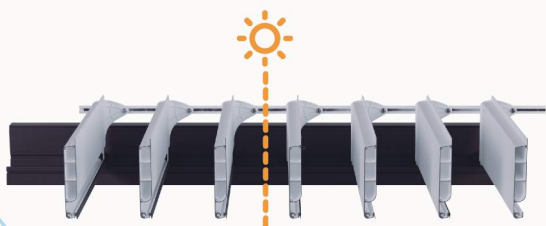
105°

The 105° position allows for the flow of air and the regulation of light through the slats according to your needs.



90°

In the 90° or safety position, the SIWAH pergola allows light, air, rain, and snow to pass through, preventing accumulation on the top.



↙

Slat inclination

Maximum protection and sealing against wind, rain, and UV rays. You can easily choose and customise the desired opening.



Drainage perimeter sealing

Thanks to the perimeter sealing, the Siwah pergola is designed to be able to drain rainwater through channels.



Sealing between slats

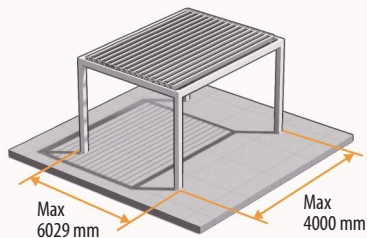
The sealing between the slats makes our pergola waterproof against rain and reduces the movement between the slats in the wind.



Maximum adaptability

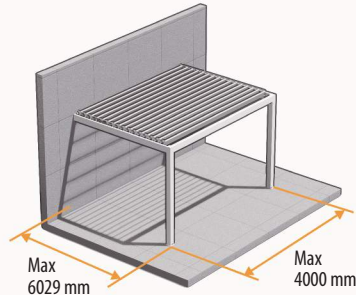
Thanks to the multiple installation options, the Siwah Bioclimatic pergola will add value

to wherever it is installed, and it is fully customisable.



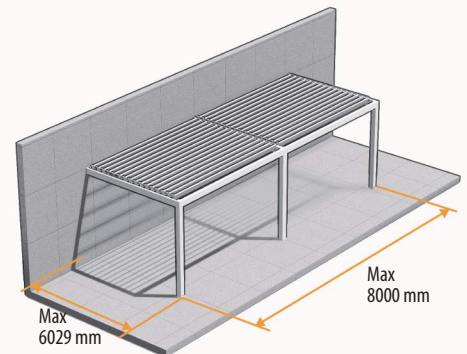
FREE-STANDING pergola

Without the need for a nearby building, it is the best option for creating a new living space.



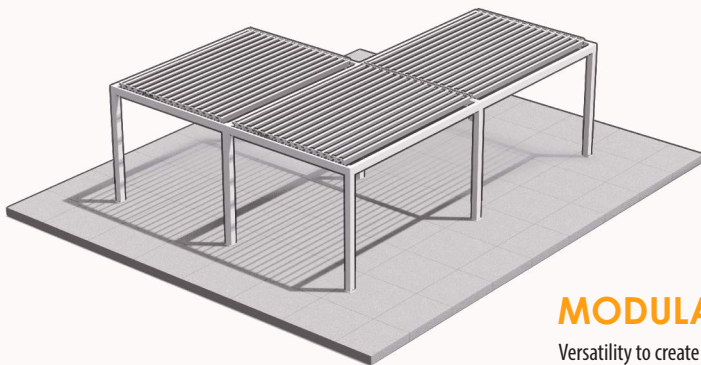
WALL-FLOOR mounting

Attached to a wall and supported by its pillars, it is perfect for expanding existing areas or creating a new room next to a building.



DOUBLE-WALL installation

The creation of intermediate elements to allow two pergolas to be joined together means that Siwah is not limited in terms of metres of coverage.



MODULARITY

Versatility to create a unique space. Siwah allows you to modulate several pergolas to create just one structure.

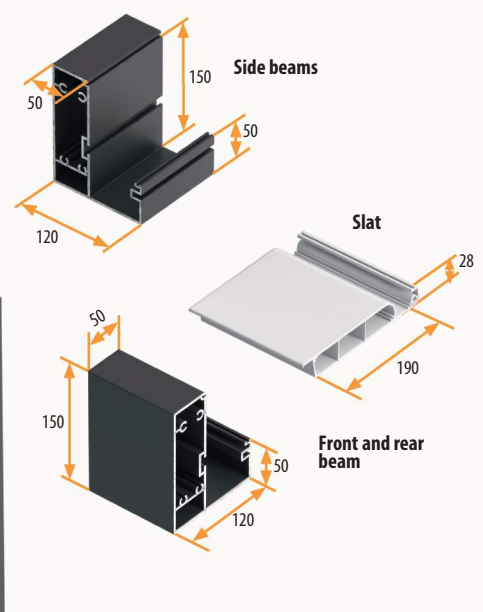


SLAT orientation

Designed to customise the orientation as required. By default, slats are placed parallel to the line/wall.



Structural information



ACCESSORIES



Lighting

Neon LED perimeter lighting with different degrees of intensity.



QATIF Enclosure

Side closing option with Qatif Lite vertical awnings. Available in various types of fabrics: transparent, opaque, mosquito netting, waterproof, etc.



+GLASS Enclosure

Option of installing a glass screen.
Insulation that preserves full luminosity.





NEW
GENERATION
AWNINGS
& PERGOLAS

WARRANTY
10
YEARS



www.sahara-pergolas.com

